

# EFFICIENT WELDING IN ALL ASPECTS WITH THE MICORMIG AND THE TRAC

## LOWERING WELDING TIMES AT IMPROVED PRODUCTIVITY

Faymonville Group is the world's leading supplier of heavy and special transporters. The company chose the Lorch MicorMIG 400 for its assembly lines based on comprehensive market research. The MIG-MAG welding inverters prevailed in the selection procedure due to their energy-efficient and easy operation. The decisive feature, however, was their high penetration and the reduced number of layers and welding time made possible by the SpeedArc welding process. The company achieved an automation effect at the same time by introducing these machines: The MicorMIG can be used flexibly as a welding current source for Lorch's Trac WL Pro welding tractor solution.

### OVERVIEW

#### FAYMONVILLE GROUP

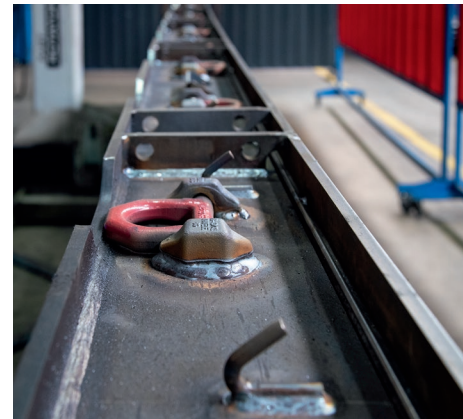
- Lentzweiler, Luxembourg
- 1,100 employees
- Vehicle construction
- [www.faymonville.com](http://www.faymonville.com)



The welding tractor is quick to install with a simple device and produces rework-free uniform weld seams.



More than 160 MicorMIG 400 are working in the five plants of Faymonville Group. The MIG-MAG welding inverter scores with the SpeedArc process for a focused arc, high welding speed, and simple, multilingual operator guidance.



The MicorMIG plays all its strengths at Faymonville, with deep penetration, a lower number of layers, and a shorter welding time.

Consistent weld seam quality and high time savings

## AUTOMATED WELDING WITH THE TRAC WL PRO

Faymonville uses the Lorch Trac WL Pro rail-guided welding tractor in order to tap automation potential in the welding process. The automated welding solution, connected to the MicorMIG 400 welding current source via Lorch Plug&Weld, is a practical tool for segment welding as well as for weld seams with high volumes and larger throat

thicknesses. Qualities such as optimised weld seam tracking and programmable welding sequences come into play here. The constant and reproducible welding speed of the tractor weighing only 8 kilograms ensures a consistent weld seam quality. On top of this, the increased travel speed between the weld segments saves plenty of time.



**"Lorch's MicorMIG 400 has convinced everyone from the technical manager to the welders."**

**– Carsten Faber, process engineer**

## FACTS

- High energy and productivity efficiency
- High penetration and significant reduction of welding times
- Simple and multilingual operation
- Future-proof due to upgradeability
- Automated welding in combination with the Lorch Trac WL Pro
- Excellent and visually flawless welds

