

MADE IN GERMANY



# ROBUST. PROFITABLE. R-SERIES.

The workshop champion.

[www.lorch.eu](http://www.lorch.eu)

**LORCH**  
smart welding

# Absolutely robust and extremely effective: the R-series.

The latest generation for your workshop.

Just the right compact welding systems for harsh use in practice: A robust housing, coupled with smart inverter technology, brings MIG-MAG perfection to industry standards into your workshop. The R-series is the ideal partner for any welding tasks in workshop and light fabrication.

**As a special feature**, the system remains easy to operate, offering many setting options for clean weld seams without requiring any rework.

Perfectly adjusted welding programmes are available for all common applications in workshop and light fabrication. No matter the material-wire-gas combination chosen, the R-series can weld on the highest level. It supplies the best arc for any material, even if aluminium or stainless steel are welded instead of steel, or if flux-cored wire or brazing tasks are at hand.

## Optimum weld seams

thanks to tried and tested inverter technology with optimised setting functions.

## Simple operation

on the intuitive control panel with well-structured graphical display.

## Robust, stable, and compact housing

Perfect design for use in the workshop.

## Reliable, secure, and efficient

Facilitates everyday work of welding specialists, production managers, and companies alike.



## Turn on. Weld. Achieve an excellent weld seam.

The knowledge of the very best welders in a single system.

The automatic synergic adjustment simply and reliably gives you perfect weld seams – without any in-depth set up required. This not only saves time and money, but also ensures a consistently high quality to your welding work.

When there is a lot to do, the R will show its colours. The robust wire feed system with feed rollers tried and tested in the industry ensure a stable, precise, and reliable wire feed. This is a prerequisite for continuous welding and clean weld seams. Thanks to good duty cycles, even long weld seams can be welded quickly and optimally.

The soft, low-spatter arc makes the weld pool control a walk in the park. The stepless inverter power setting also allows performance adjustment even during welding. This makes sure that truly every single weld seam is just right.

# 3 steps to weld.

Ingeniously simple. Operation – Made by Lorch.

The well-structured control panel makes welders' lives easier.

The perfect welding result is just a few steps away.

Simply pick the process and the operating mode (2-/4 step trigger, spot and stitch welding), set the right welding programme, and start working immediately. The system will do everything else. The graphical display will show all relevant parameters at a glance to visualise the different settings easily and logically.

The space within the wire feed housing contains a programme table with associated material-gas-wire combinations in order to facilitate selection of the right welding programme.

Anyone who wants more than that can customise various values to their own preferences or the welding situation at hand.

It cannot get any simpler.

## 1 Primary welding procedure selection

Turning the dial switch at the upper left will let you set the welding process **MIG-MAG**, **MMA**, and **TIG**. MIG-MAG, i.e., the three left selection options, also offers a choice of operating mode.

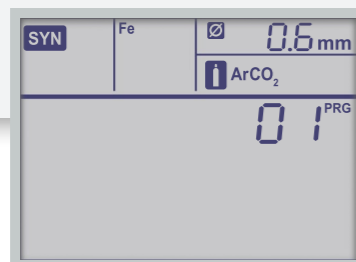
## Visualised sheet thickness and weld seam geometry

The virtual weld seam displayed illustrates the sheet thickness and the effects of various settings on the weld seam.



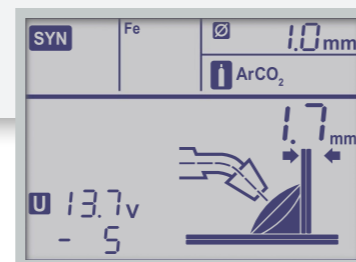
## 2 Programme selection

The welding programmes contain the know-how of the world's best welders. All you need to do is choose your material, wire, and gas. You don't need to find any further parameters. The system will supply them automatically.



## 3 Setting the material thickness

The R-series lets you simply start welding. All you need to do is set the sheet thickness. The system will supply the matching values for your welding task.



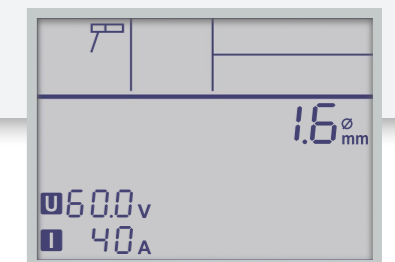
## Arc length correction

The arc length can be customised as required. Set the arc to be longer or shorter for this. The weld seam geometry change will be visualised on the display.



## Modes for MMA and TIG welding

The R series offers MMA welding with diameter recommendations and TIG welding.



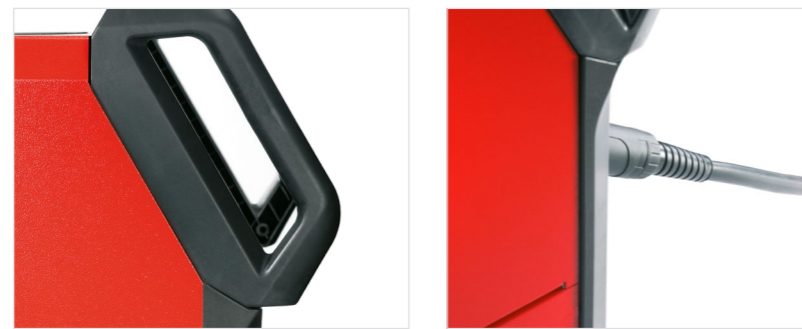
## Robust, practical, and sophisticated.

Ideal for use in the workshop.

The housing is highly robust and can be manoeuvred easily with stable handles. Crash protection on the handles protects the display when space is scarce. The slip-proof rubber mat on the top of the housing serves as a practical stowage surface.

Thanks to its compact build, the R fits under any workbench, where it will wait for the next deployment after its work is completed.

The welder's working environment is the standard by which we measure ourselves. Therefore, special features ensure greatest safety at work.



- **Large rear wheels** facilitate rolling over obstacles and uneven ground, a braked wheel at the front secure a stable stance and prevent rolling away.
- The **angled torch connection** warrants an ideal wire guide while protecting the hose package and cables.
- The gas cylinders are **doubly secured** to let you move the power source and gas cylinder safely at all times.

## Feed roll exchange as is should be.

Feed roll exchange without any screws or tools.

The R-series has a practical quick exchange system for the wire feed rolls on board. Simply replace the wire without any screws or tools. It's faster and you will never need to go looking for retaining screws again.

The system additionally has space for four wire feed rolls. Use of double grooved rolls maximises flexibility; after all, you can simply switch to a second wire diameter. The different rolls are easily identified by the colour marking of the rings.



## An all-rounder in any situation.



**EN 1090 compliant:** by displaying all standard-relevant parameters of the last weld seam



**Universal connections:** Euro central connection and standard welding current connection

**3 in 1**

**Multi-prozess:** 3 procedures in a single system (MIG-MAG, MMA, TIG)

**IP23S**

**Tried and tested.** The result: Most highly suitable for the workshop



**Generator-capable:** high flexibility

# This lets it optimally play its advantages.

A master in your area of use as well.

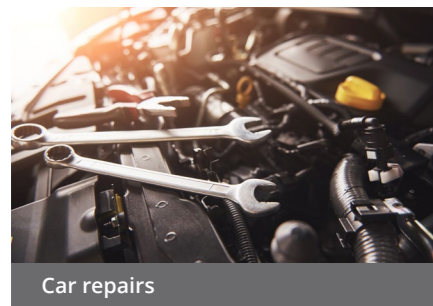
Are you looking for a robust, long-lived welding unit that is easy to operate even for welders with little practice and that supplies perfect welding results? The R-series is the system of your choice then.



Workshop and light fabrication



Hobby users with high standards



Car repairs



Locksmiths' shop and metalworking



Agriculture



House and building technology



Metal-processing crafts



## Lorch quality that is worth it.

An unbeatable price-performance ratio.

We at Lorch know where to be economic and where to not be. As a result, the R-series is shining with inverter technology at the workshop price.

Made in Germany – as a matter of course.

“The R-series –  
my best buddy”



# Customised for the workshop.

Our comprehensive accessories ideally supplement the R series.

Assemble your matching package and start welding right away.  
Talk to your partner on site – they will gladly advise you.



## APR 900

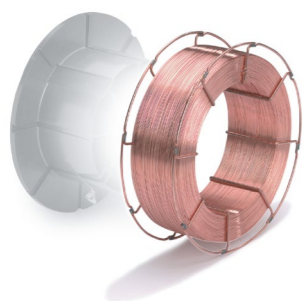
### Auto darkening filter Autoprotect APR 900

High-end auto darkening filter with protection levels 3 | 5 – 8 | 9 – 14 and visual category 1 | 1 | 1 | 1. For all common procedures, with grinding mode and true-colour vision.



## Work return cable and basket spool adapter

Work return cable and plug 25 mm<sup>2</sup>, 4 m long, plug 13 mm.  
Adapter for insertion of a welding wire basket spool.



## Welding wire

Your specialist dealer will sell you the welding wire to match your application.



## Pressure reducer

Pressure reducer with content gauge and flow meter.



## Gloves

Made of resilient leather, they resist high temperatures and metal spatters.



## MIG-MAG torch

Highest processing quality, optimal wire guide, exemplary ergonomics, a highly flexible hose package, and the wear-resistant torch neck: All of this contributes to a true Lorch MIG-MAG torch. The optimal current transfer between the torch and welding wire will give you the system's full performance. Enjoy the perfect team for any welding job in your workshop when working with an R welding system.

## TECHNICAL DATA

		R 200	R 300
<b>Welding range MIG-MAG</b>			
Weldable materials		Steel, stainless steel, aluminium	
Welding range	A	20 – 220	20 – 290
Welding range	V	15 – 25	15 – 31
Open circuit voltage	V DC	60	63
Current at 100 % ED (40 °C)	A	100	200
Current at 60 % ED (40 °C)	A	105	215
<b>Device</b>			
Mains voltage	V	1–230	3–400/3–230
Mains fuse	A	16 (slow-blow)	16 (slow-blow)
Mains plug		Schuko	CEE 16
Protection class (EN 60529)		IP23S	IP23S
Wire feed unit		2 rolls	4 rolls
Dimensions (L × W × H)	mm	880 × 400 × 755	880 × 400 × 755

**Our partners are ready for you.**

Also in your area.

The Lorch partner network  
[www.lorch.eu/partner-finder](http://www.lorch.eu/partner-finder)





MADE IN GERMANY

Your local Lorch partner:



More info also available on  
[www.lorch.eu](http://www.lorch.eu)



Lorch Schweißtechnik GmbH  
Im Anwänder 24 - 26 · 71549 Auenwald · Germany  
T +49 7191 503-0 · F +49 7191 503-199  
info@lorch.eu · www.lorch.eu

**LORCH**  
smart welding