














# Lorch TRAC Novelties Q1 2016

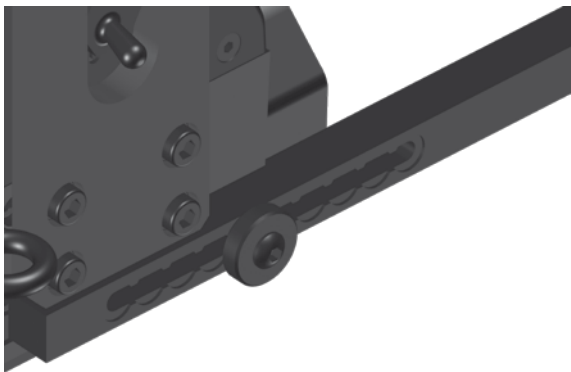
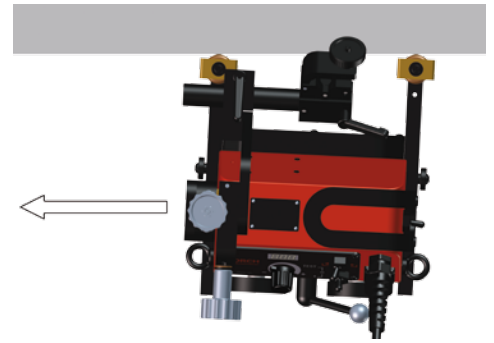
Additional accessories for LORCH TRAC WL (HS), TRAC WL PRO and TRAC WL BATT

	Product-No.	Product description	For following TRACs	Comment
	463.8014.0	TRAC Cable anchor WL BATT	TRAC WL BATT	
	463.8049.0	TRAC Guide arm with brass roller WL Set of two guide arms	TRAC WL TRAC WL HS TRAC WL BATT	Replaces 463.8041.0
	463.8050.0	TRAC Low guide arm WL Set of two guide arms	TRAC WL TRAC WL HS TRAC WL BATT	Allow positioning the carriage along low ceilings
	463.8051.0	TRAC High guide arm WL Set of two guide arms	TRAC WL TRAC WL HS TRAC WL BATT	Allow positioning the carriage along walls with holes
	463.8052.0	TRAC Knurled nut WL	TRAC WL TRAC WL HS TRAC WL BATT	Special knurled nut allows precise adjusting of guide arm intervals
	463.8070.0	TRAC Guide arm brass roller WL PRO Set of two guide arms	TRAC WL PRO	Replaces 463.8060.0
	463.8071.0	TRAC Low guide arm WL PRO Set of two guide arms	TRAC WL PRO	Allow positioning the carriage along low ceilings
	463.8072.0	TRAC High guide arm WL PRO Set of two guide arms	TRAC WL PRO	Allow positioning the carriage along walls with holes
	463.8073.0	TRAC Knurled nut WL PRO	TRAC WL PRO	Special knurled nut allows precise adjusting of guide arm intervals
	463.8016.0	TRAC Vacuum pad	TRAC RL TRAC RL PRO	
	463.8217.0	TRAC Start Stop cable 2 x power sources	All TRACs	
	463.8218.0	TRAC Extension-Cable 10 m	All TRACs	
	463.8026.0	TRAC Magnetic block flex track (box with 10 pieces)	TRAC WL TRAC WL HS TRAC WL BATT TRAC WL PRO	Replaces 463.8021.0

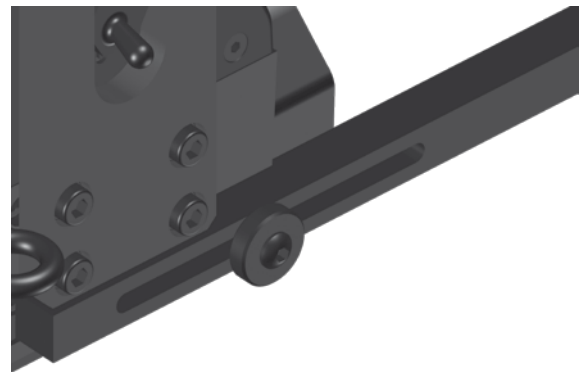
### Improved positioning of the guide arms via fixing grooves

**The new improved guide arms allow an even better positioning of the welding carriages on the workpiece.**

- 7 different guide arm types are dedicated to allow precise guiding on different workpieces
- Fixing grooves enable simpler, easier and a more homogeneous method to adjust the position of the guide arms
- Allows adjusting the guide arm in constant intervals or continuously by exchanging the left for the right arm
- By shortening the guide arm in moving direction a permanent contact of the carriage with the workpiece is ensured



Adjusting the guide arm length with constant intervals by using the side with fixing grooves.



Adjusting the guide arm length continuously by using the side without fixing grooves.



Special knurled nut allows precise adjusting of guide arm intervals.